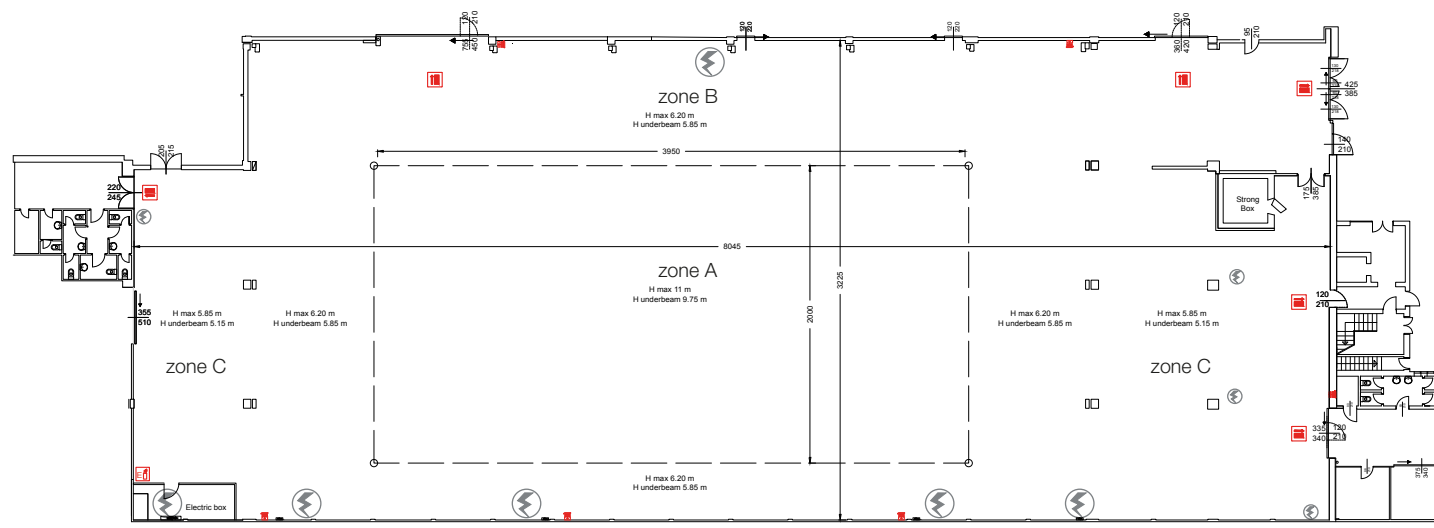
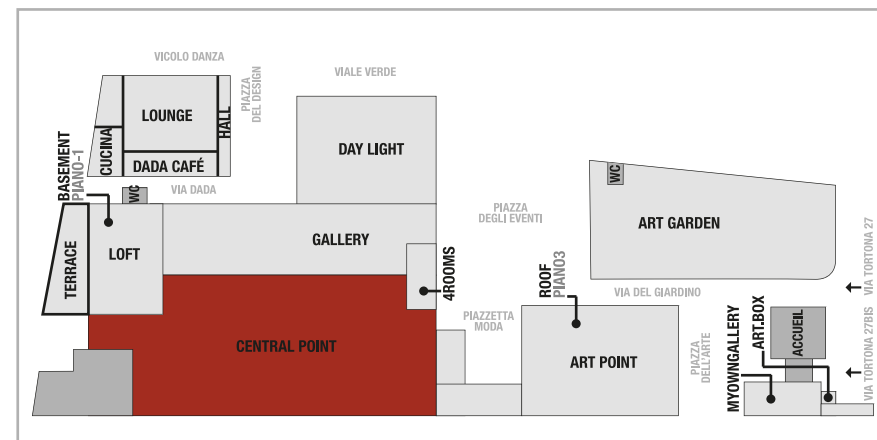


# SUPERSTUDIO PIU'



## CENTRAL POINT

The largest and most attractive space in Milan. 2,500 sq metres extendible to nearly 4,000 with the Gallery connection. The main body is a new construction 11 metres high linked to the original, now renovated building, and which allows to have an enormous surface area, without pillars. It is perfect for fashion shows, exhibitions, shots, television set, events that required big free surface. There is the possibility to put more than 2000 sitting people. It is possible to subdivide it in smaller surfaces or connect it with Art Point, Gallery, Daylight till to arrive to about 6,000 sq mt of surface.



### DIMENSIONS

Area: 2540 m<sup>2</sup>  
Dimensions: 80,46 x 32,25 m

Height max (zone A): 11,1 m  
Height underbeam (zone A): 9,75 m  
Height underbeam (zone B): 5,85 m  
Height underbeam (zone C): 5,15 m

### ELECTRICITY

1 x 400 ampere  
2 x 125 ampere  
3 x 63 ampere  
13 x 32 ampere  
16 x 16 ampere  
21 x 10 ampere



### NOTES

- Heating/air-conditioning
- Water supply/drainage
- Toilets: 6 (+ 4)
- Audio connection
- Catering room on request
- Recommended max load per hanging point: 180 kg
- Lan/wireless