

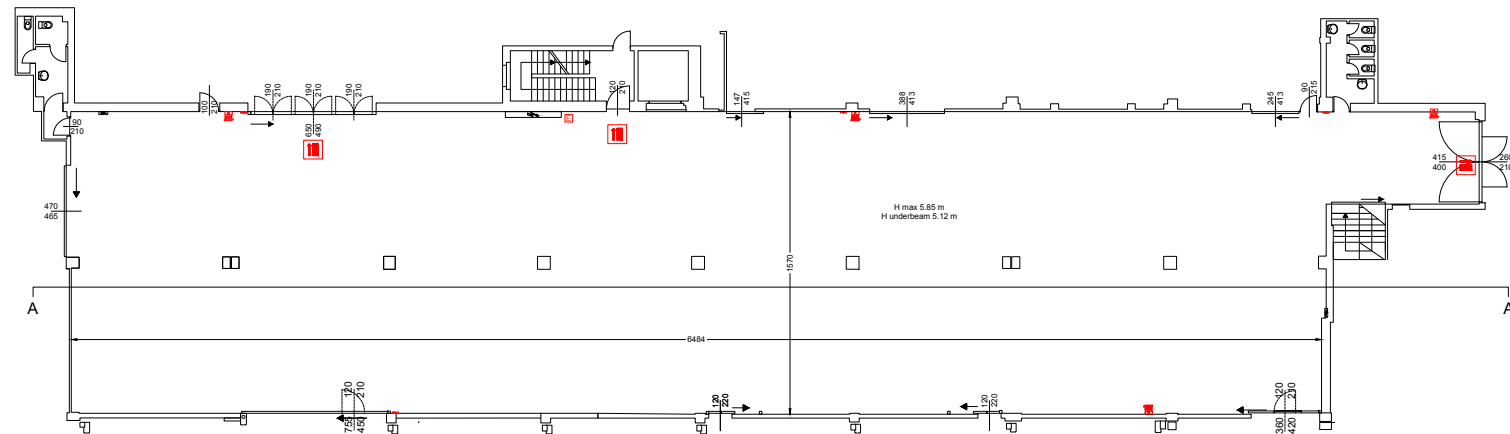
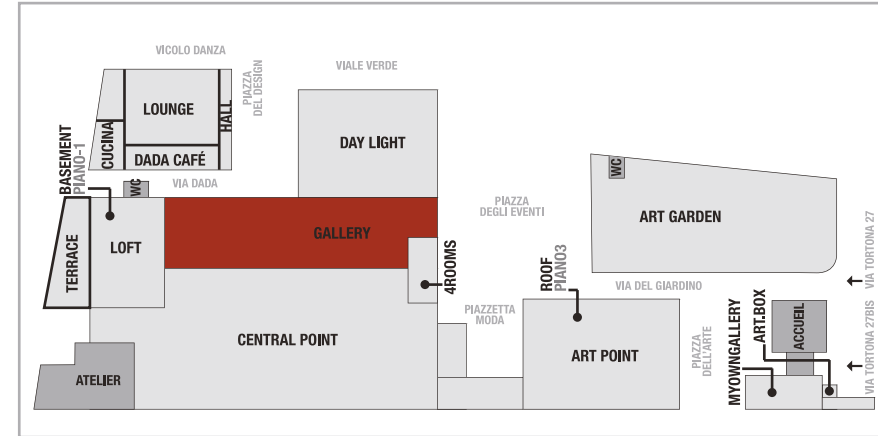
# SUPERSTUDIO PIU'

## GALLERY

A suggestive space developing in length which is lit by large windows. A series of pillars can be used as dividing points or set features.

The length of the space allows it to be easily divided, creating dimensions to your own requirements.

A connection with Central Point, Day Light and Loft is also possible, which will give virtually 5,000 sq metres of space.



### DIMENSIONS

Area: 1050 m<sup>2</sup>  
Dimensions: 65,05 x 15,70 m

Height max : 5,85 m  
Height underbeam : 5,12 m

### ELECTRICITY ⚡

1 x 400 ampere  
2 x 125 ampere  
2 x 63 ampere  
5 x 32 ampere  
9 x 16 ampere

### NOTES

- Heating/air-conditioning
- Water supply/drainage
- Toilets: 6
- Audio connection
- Catering room on request
- Lan/wireless

